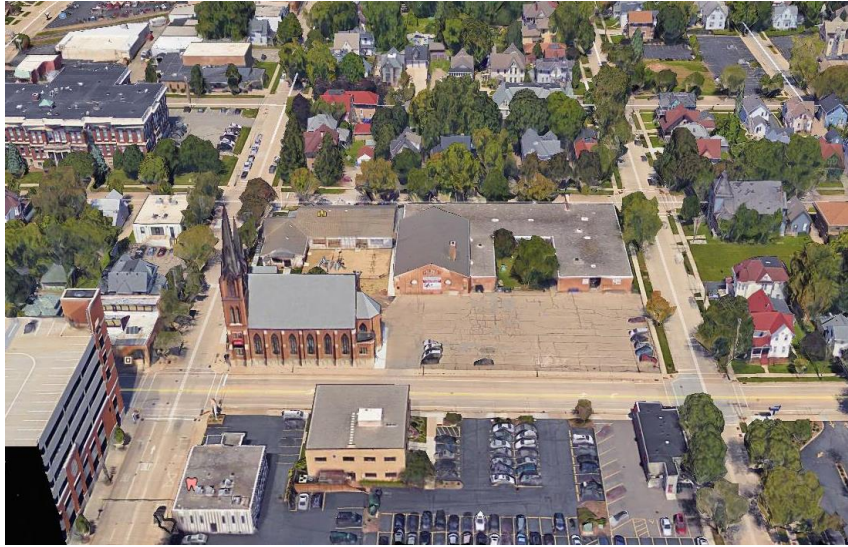


Introduction



Introduction

- **65% of those without disabilities attend religious services at least once per month**
- **47% of those with disabilities attend religious services at least once per month**

- **73% of those with disabilities say their faith is very important to them**
- **55% of those without disabilities say their faith is very important to them**



Discussion focus

- **Code requirements**
- **Elements of accessibility**
 - **Parking**
 - **Entrance**
 - **Worship space**
 - **Bathrooms**
- **Insight to share at your home congregation**



Expectations

- **Americans with Disabilities Act, 1990**
- **State Building Codes (International Building Code, Chapter 11), tells us WHAT**
 - Americans with Disabilities Act Accessibility Guidelines (ADAAG), tells us HOW
 - American National Standards Institute (ANSI, Section A117.1), tells us HOW
- **What is in effect varies from state to state**

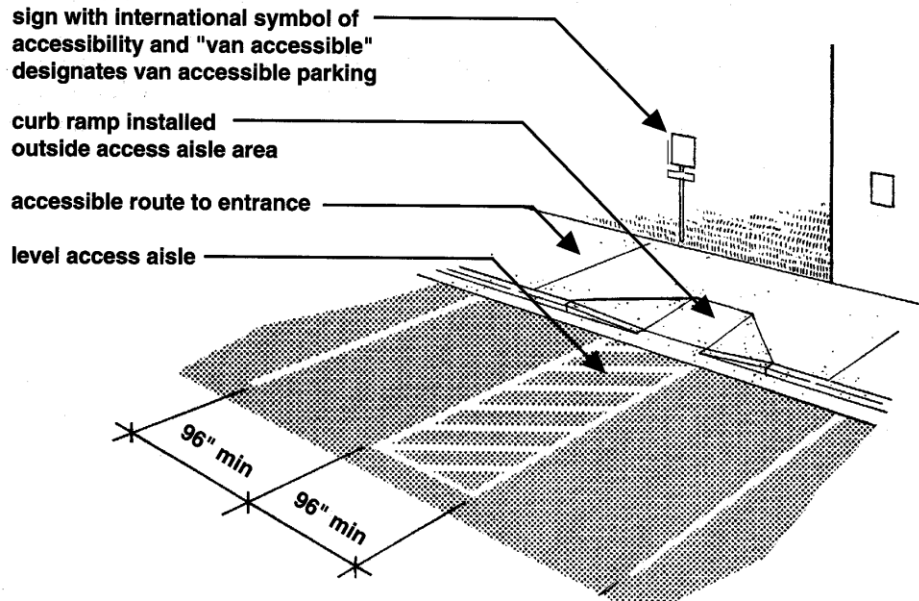


Building codes– WHAT vs. HOW example

- **International Building Code, Chapter 11– identifies what quantity of accessible parking stalls are required**

TABLE 1106.1
ACCESSIBLE PARKING SPACES

TOTAL PARKING SPACES PROVIDED	REQUIRED MINIMUM NUMBER OF ACCESSIBLE SPACES
1 to 25	1
26 to 50	2
51 to 75	3
76 to 100	4
101 to 150	5
151 to 200	6
201 to 300	7
301 to 400	8
401 to 500	9
501 to 1,000	2% of total
1,001 and over	20, plus one for each 100, or fraction thereof, over 1,000



- **ADAAG and ANSI tells us how to design each accessible parking stall**

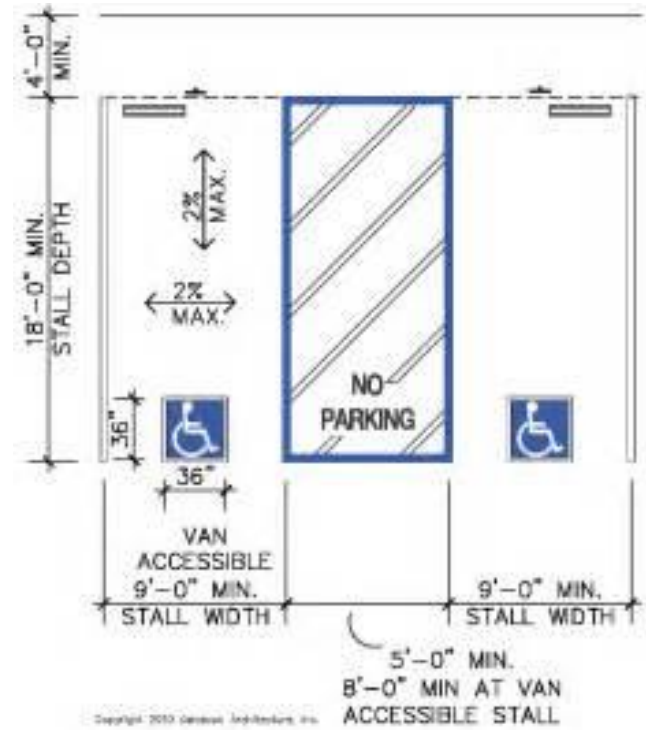


- **Is a church required to follow the Americans With Disabilities Act?**
 - Is any part of your building shared with the public or rented by outside groups?
 - Are you renovating or building a new building?



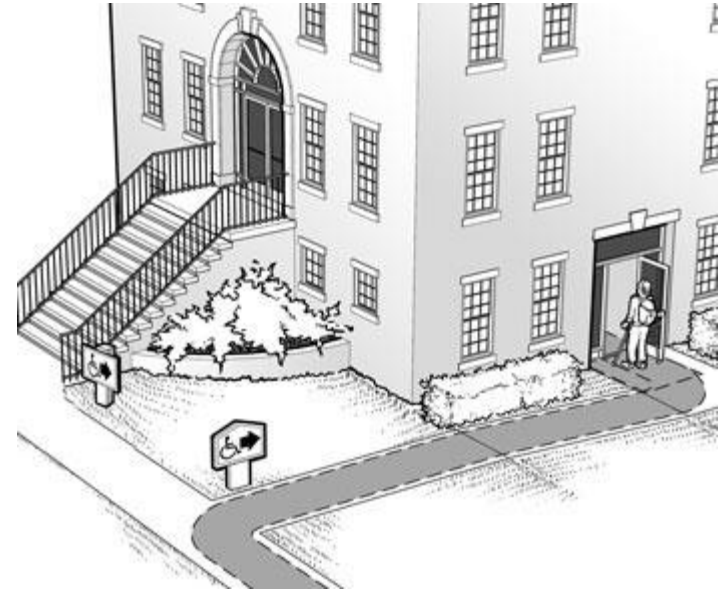
Components on the accessible route

- Accessible parking spaces



Components on the accessible route

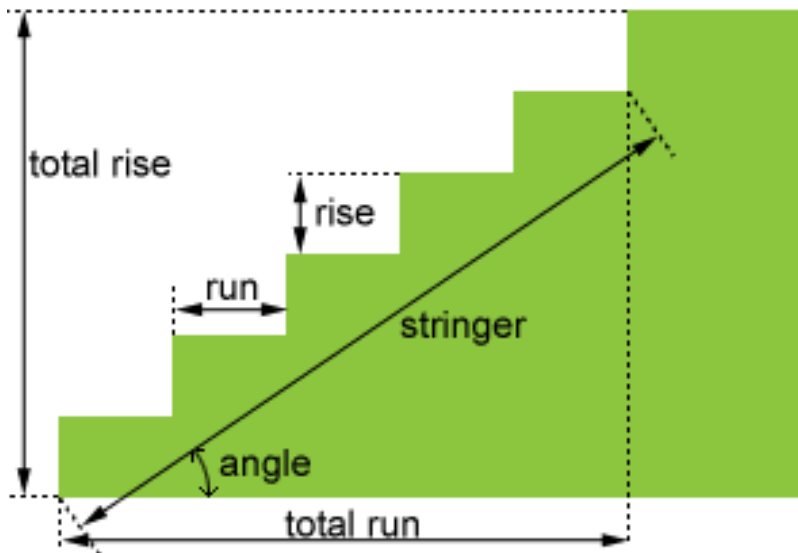
- **Entry: Ramps**
 - 1:12 Slope maximum
 - Alternative accessible route



Components on the accessible route

- **Entry: Stairs**

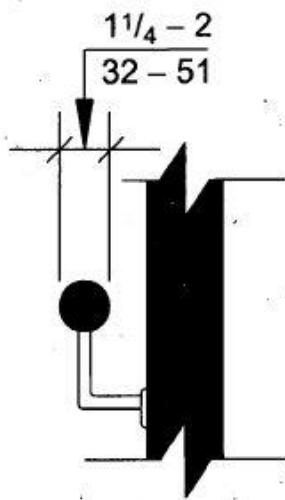
- 7" maximum rise
- 11" minimum run



Components on the accessible route

- Handrails

- 6" vertical step
- clearance and diameter
- Top of handrail height



(a)
Circular

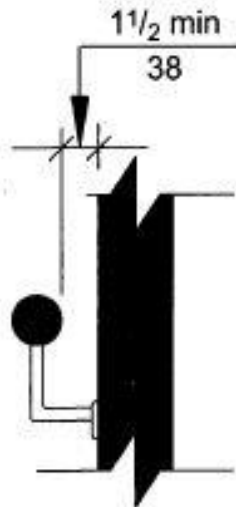


Fig. 505.5
Handrail Clearance

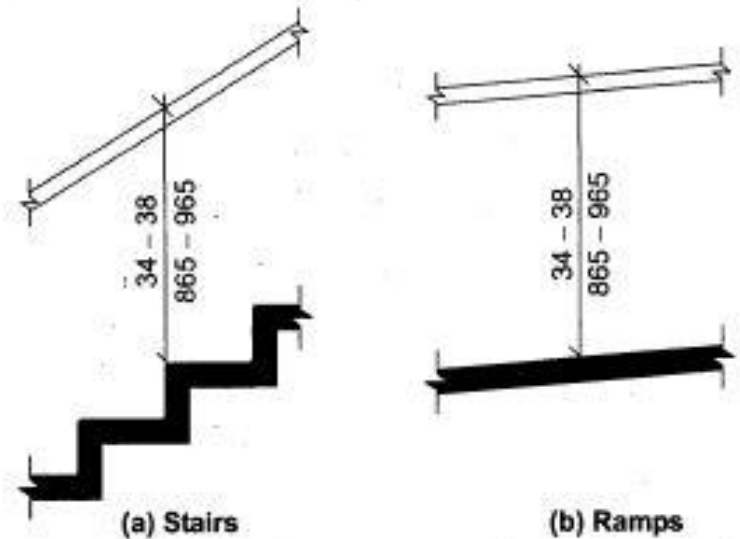


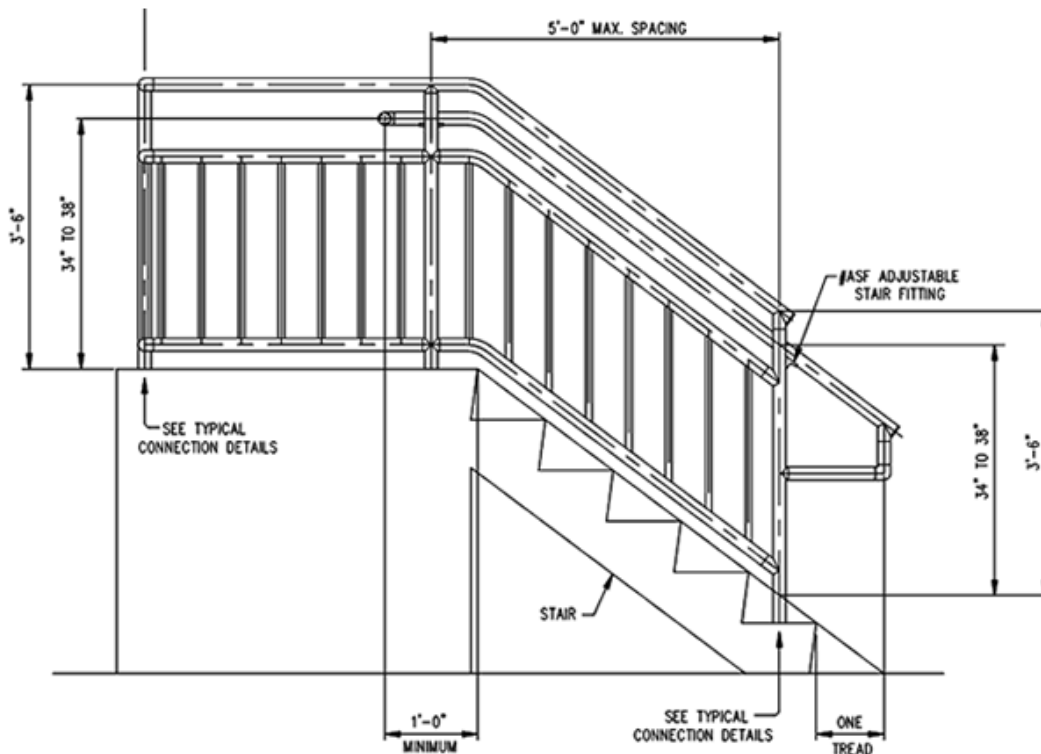
Fig. 505.4
Handrail Height



Components on the accessible route

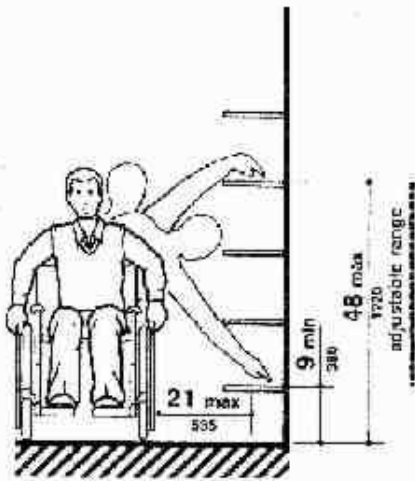
- **Guardrails**

- Handrails versus guards
- 30" vertical separation

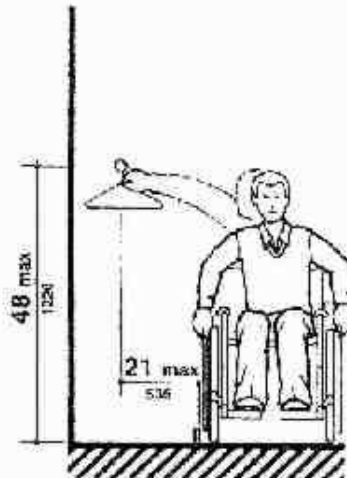


Entering the Building

- Narthex
 - Mailboxes
 - Coat Racks
 - Drinking Fountain



(a) Shelves



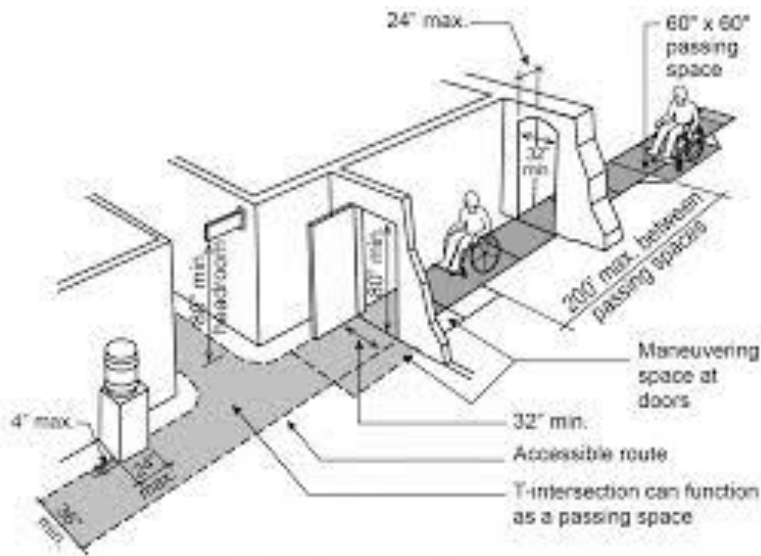
(b) Closets

Fig. 38
Storage Shelves and Closets

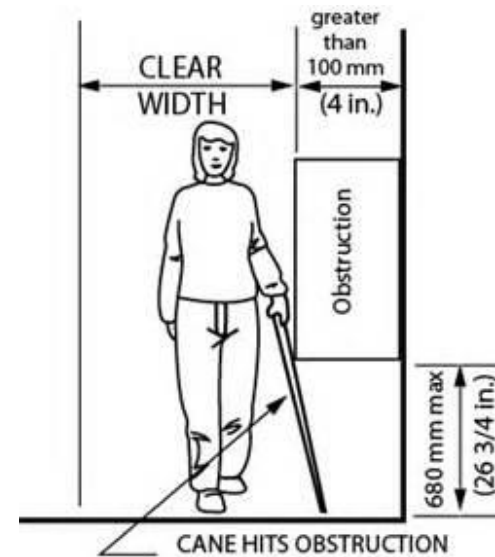


Moving Through the Building

- Narthex
 - Doorknobs
 - Protruding objects
 - Door widths

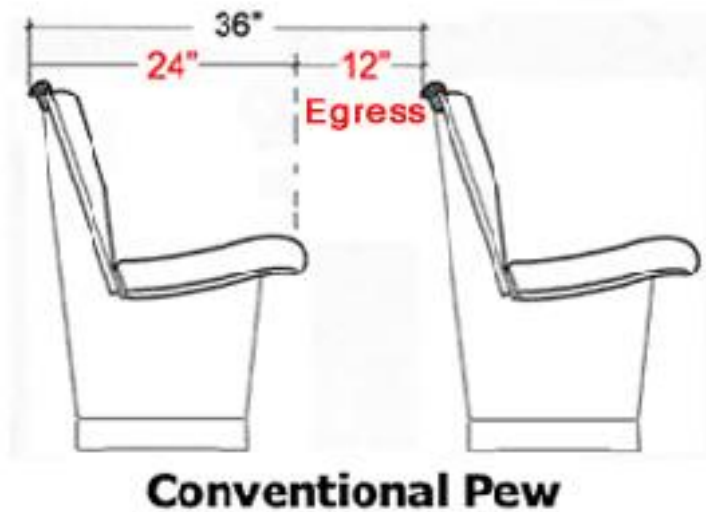


Basic Features of an Accessible Route



Worship

- Nave
 - Pew Cuts
 - Pew Spacing— assumes no more than 14 persons in one pew



Worship

- Chancel
 - Baptismal Font
 - Lord's Supper
 - Pulpit




Worship

• Chancel

- Lighting
- Large Print Bulletins
- Screens?





ST. PAUL LUTHERAN
MINISTRIES
CHURCH · SCHOOL · CHILDCARE

The Day of Pentecost June 4th & 5th, 2017

The Outpouring of the Spirit

That glory is not dimmed by earthly suffering, rather, such suffering reminds us of the glory that awaits us. The week that falls between Ascension and Pentecost is one of waiting and expectation for the promised Spirit and the promised glory.

HYMN We Now Implore God the Holy Ghost – **CW 190**

P: The grace of our Lord Jesus Christ and the love of God and the fellowship of the Holy Spirit be with you.
C: And also with you.

CONFESSION OF SINS

P: God invites us to come into his presence and worship him with humble and penitent hearts. Therefore, let us acknowledge our sinfulness and ask him to forgive us.

C: Holy and merciful Father, I confess that I am by nature sinful, and that I have disobeyed you in my thoughts, words, and actions. I have done what is evil and failed to do what is good. For this I deserve your punishment both now and in eternity. But I am truly sorry for my sins, and trusting in my Savior Jesus Christ, I pray: Lord, have mercy on me a sinner.

P: God, our heavenly Father, has been merciful to us and has given his only Son to be the atoning sacrifice for our sins. Therefore, as a called servant of Christ and by his authority, I forgive you all your sins in the name of the Father and of the Son and of the Holy Spirit.

C: Amen.

LORD HAVE MERCY

P: For all that we need in life and for the wisdom to use all your gifts with gratitude and joy, hear our prayer, O Lord.

C: ¶ Lord, have mercy.

P: For the steadfast assurance that nothing can separate us from your love and for the courage to stand firm against the assaults of Satan and every evil, hear our prayer, O Christ.

C: ¶ Christ, have mercy.

P: For the well-being of your holy Church in all the world and for those

2



Accessory spaces

- Bathrooms – water closets

- Grab Bars
- Sizes

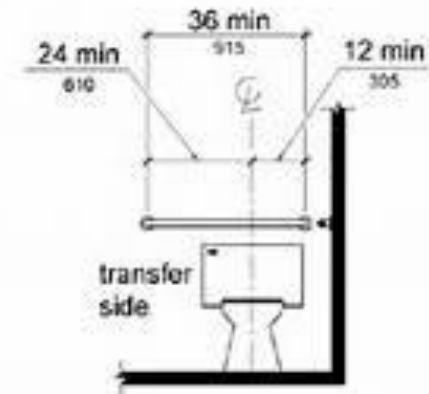
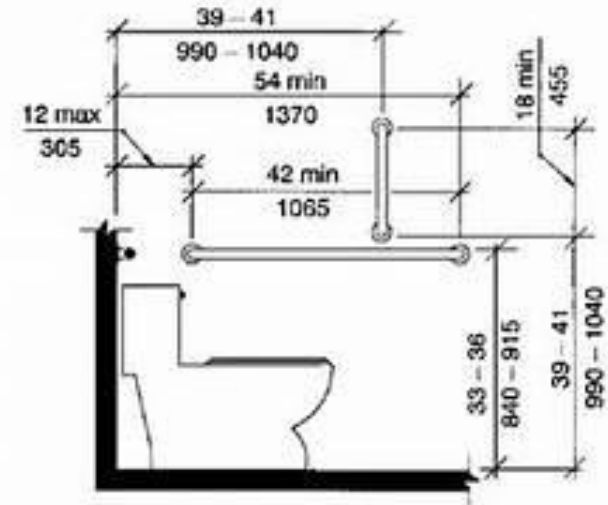


Figure 604.5.2
Rear Wall Grab Bar at Water Closets



Accessory spaces

- Bathrooms– sinks and accessories
 - Accessories
 - Soap dispenser
 - Paper towel dispenser
 - Mirror Height
 - Sink Height



Areas for improvement

- **Entrance**

- Provide handicapped marked stalls closest to accessible entrance
- Keep all surfaces smooth– no uneven surfaces
- Handrails when needed

- **Narthex / Welcome**

- Large print bulletins
- Coats and mailboxes at lower heights

- **Worship**

- Location of Baptismal Font
- Distribution of Lord's Supper

- **Bathrooms**

- Grab Bars, even in non-compliant water closets
- Non-slip flooring
- Adjust heights of sinks,

