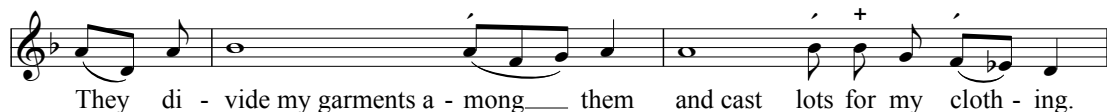
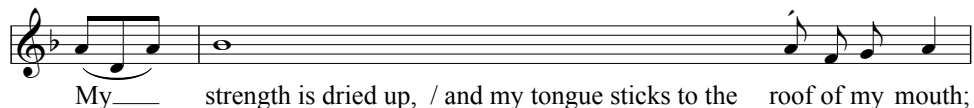
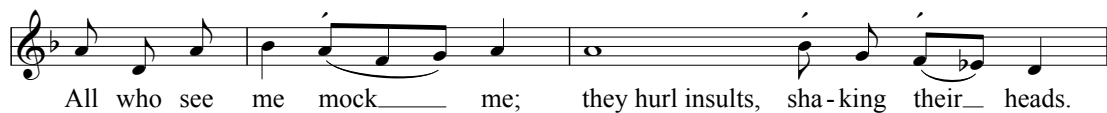


# Psalm 22

*The Wittenberg Psalter*

Chorale-Tone X  
after *Aus tiefer Not*



But you, O LORD, be not far off; O my Strength, come quick-ly to help\_ me.

Glo - ry be to the Father and to\_\_\_ the Son and to the Ho - ly Spir - it,

as\_\_\_ it was in the be - gin - ning, is now, and will be for - ev - er. / A - men.

The image shows a musical score for three lines of text. Each line of text is aligned with a single staff of music. The music is written in a single system. The first line of text is "But you, O LORD, be not far off; O my Strength, come quick-ly to help\_ me." The second line is "Glo - ry be to the Father and to\_\_\_ the Son and to the Ho - ly Spir - it,". The third line is "as\_\_\_ it was in the be - gin - ning, is now, and will be for - ev - er. / A - men." The music consists of a single melodic line on a treble clef staff. The notes are mostly quarter and eighth notes, with some rests. The lyrics are placed below the notes, with some words underlined or connected by lines to indicate phrasing.