

Psalm 24

The Wittenberg Psalter

Chorale-Tone XVII
after *Macht hoch die Tür*



L: The earth is the LORD'S, and every - thing in it, the world, and all who live in it;



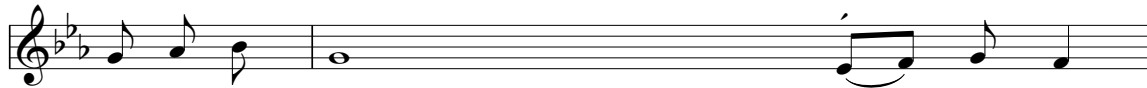
for he founded it up - on the seas and established it up - on the wa - ters.



C: Who may as - cend the hill of the LORD? Who may stand in his ho - ly place?



He who has clean hands and a pure heart, he will receive blessing from God his Sav - ior.



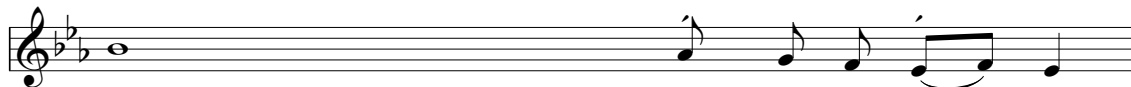
L: Lift up your heads, O you gates; / be lifted up, you an - cient doors,



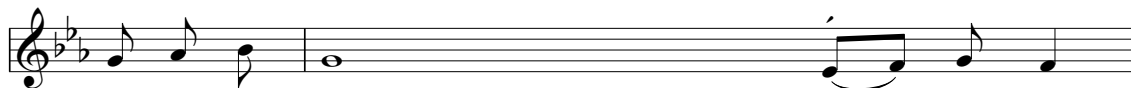
that the King of glo - ry may come in.



Who is this King of glo - ry?



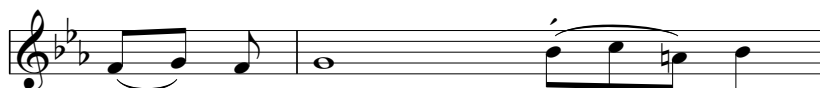
The LORD strong and mighty, / the LORD might - y in bat - tle.



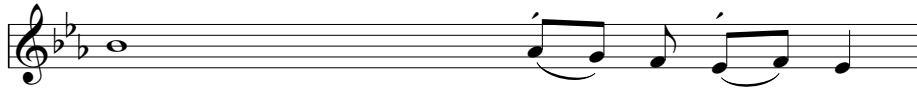
C: Lift up your heads, O you gates; / lift them up, you an - cient doors,



that the King of glo - ry may come in.



Who is he, this King of glo - ry?



The LORD Almighty, / he is the King_ of glo - ry.



C: Glo - ry be to the Father and to___ the Son and to the Ho - ly Spir - it,



as___ it was in the be - gin - ning, is now, and will be for - ev - er. / A - men.