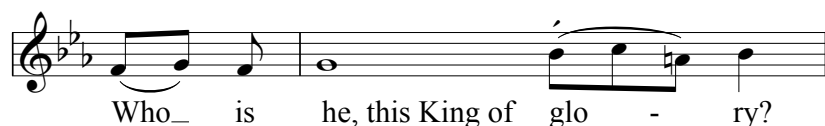
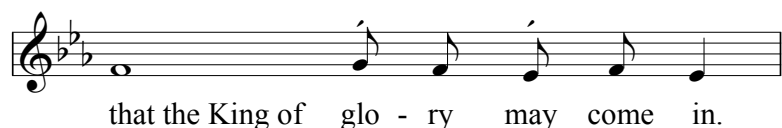
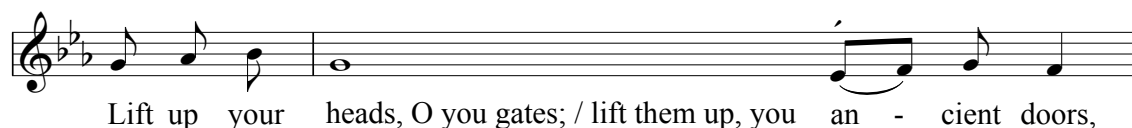
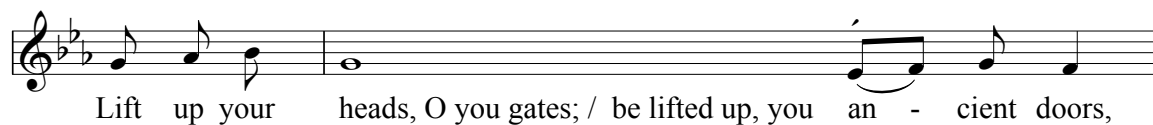
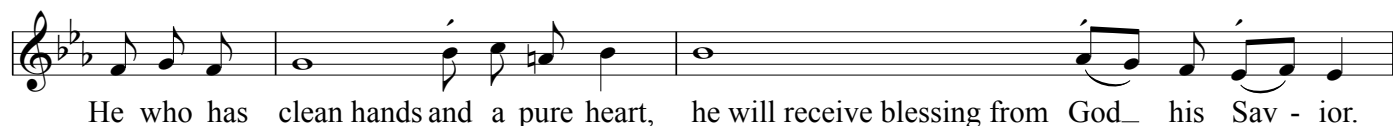
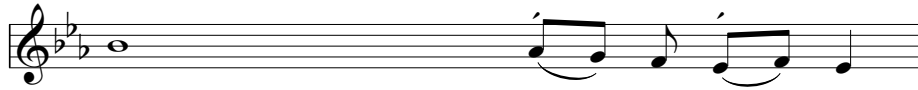


# Psalm 24

*The Wittenberg Psalter*

Chorale-Tone XVII  
after *Macht hoch die Tür*





The LORD Almighty, / he is the King\_ of glo - ry.



Glo - ry be to the Father and to\_\_\_ the Son and to the Ho - ly Spir - it,



as\_\_\_ it was in the be - gin - ning, is now, and will be for - ev - er. / A - men.