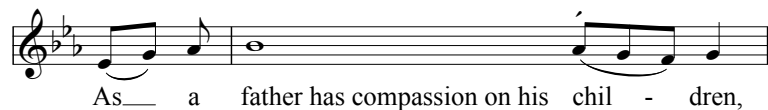
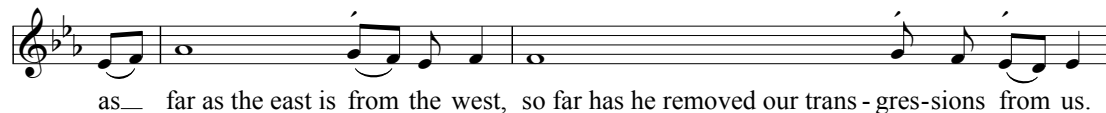
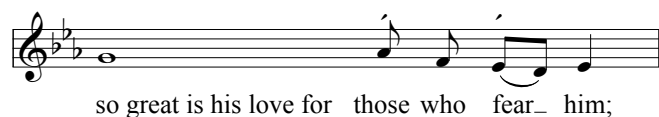
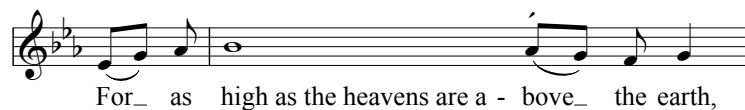
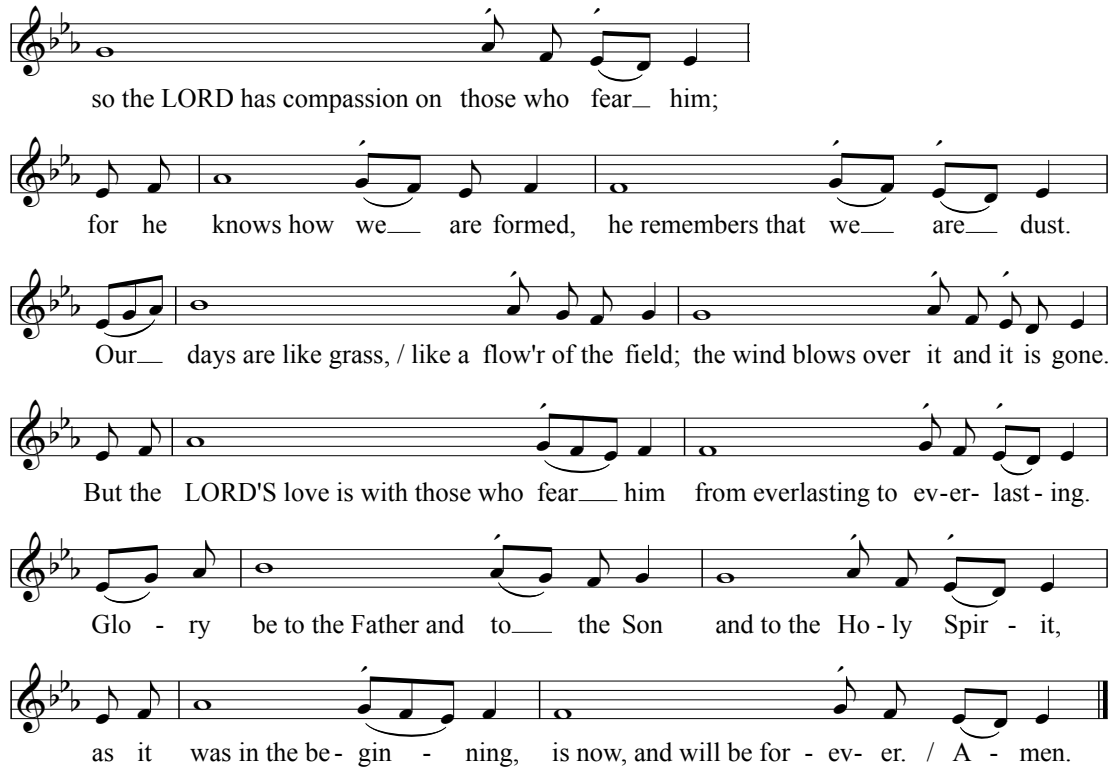


Psalm 103

The Wittenberg Psalter

Chorale-Tone VII
after *Allein Gott in der Höh' sei Ehr'*





so the LORD has compassion on those who fear him;

for he knows how we are formed, he remembers that we are dust.

Our days are like grass, / like a flow'r of the field; the wind blows over it and it is gone.

But the LORD'S love is with those who fear him from everlasting to ev-er- last-ing.

Glo - ry be to the Father and to the Son and to the Ho - ly Spir - it,

as it was in the be- gin - ning, is now, and will be for - ev- er. / A - men.