

Psalm 46

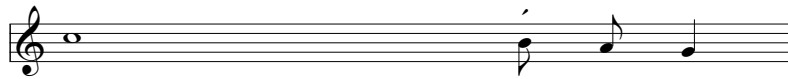
Setting 2

The Wittenberg Psalter

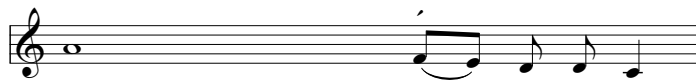
Chorale-Tone V after *Ein Feste Burg*
adapted from the Anglican chant



L: God is our refuge and strength, an ever-present help in trou - ble.



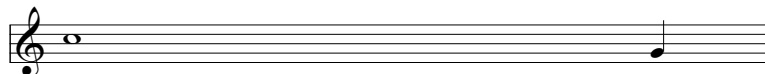
Therefore we will not fear, though the earth give way



and the mountains fall into the heart_ of the sea,



though its waters roar and foam and the mountains quake with their surg - ing.



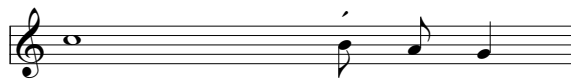
C: There is a river whose streams make glad the city of God,



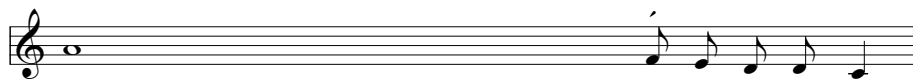
the holy place where the Most_ High dwells.



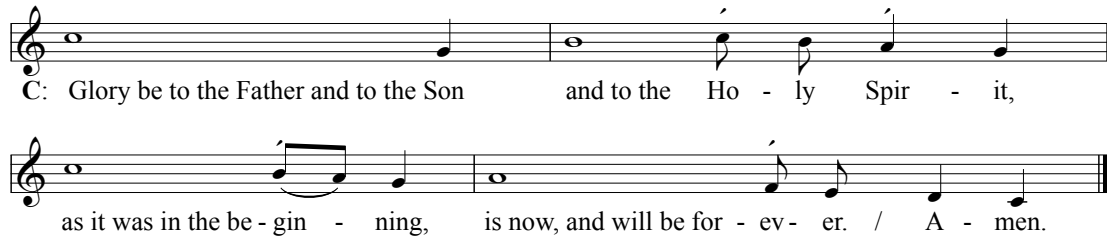
God is within her, / she will not fall; God will help her at break of day.



L: "Be still, and know that I am God;



I will be exalted among the nations, / I will be ex - alt - ed in the earth."



C: Glory be to the Father and to the Son and to the Ho - ly Spir - it,
as it was in the be - gin - ning, is now, and will be for - ev - er. / A - men.

The image shows two staves of musical notation in C major. The first staff contains the melody for the first line of the hymn, starting with a whole note on C4, followed by a half note on D4, and then a quarter note on E4. The second staff contains the melody for the second line, starting with a quarter note on F4, followed by a quarter note on G4, a quarter note on A4, and a quarter note on B4. The music is written in a simple, clear style suitable for a hymn book.